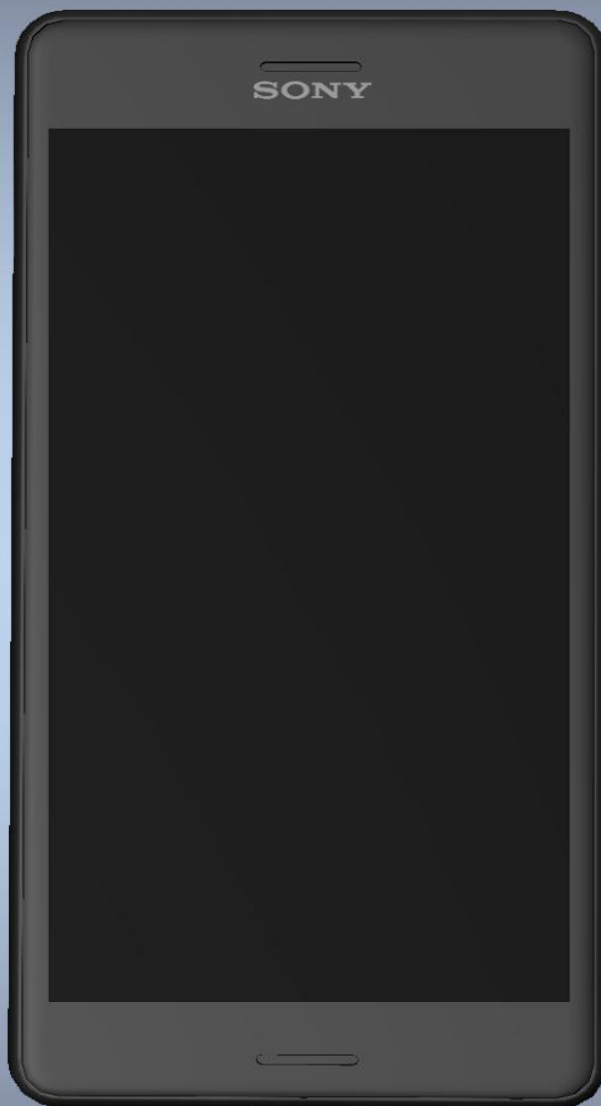


## Component Replacement - electrical -



*Xperia™ X Performance*  
*F8131, F8132 (Dual SIM)*

## CONTENTS

1	Replaceable Components .....	3
2	Tool .....	6
3	Component Placing.....	7
4	Additional Repair Info .....	9
5	Revision History .....	16

***For general information about electrical repair related issues, refer to 1220-1336: Generic Repair Manual - electrical***

***Baking prior to repair is required, if the board have been exposed to air more than 12 hours from PWB package opening. Too long exposure time increase the level of moisture in PWB and the PWB could delaminate during repair process and result in direct or latent failures and reduce reliability.***

***The boards shall be baked in 125°C ±5°C for 4 hours.***

***Test after electrical replacement: refer to 1273-1772 Mechanical Test Instruction***

***All Electrical components are RLC level C, Reversed Logistic Classification, See the Spare Part Handling chapter in Mechanical/Generic Repair Manual 1220-1333.***

***Do not remove shield can lids (Heat pasta are added and RF performance will be damaged)***

## 1 Replaceable Components

### EXPLANATION OF ABBREVIATIONS USED IN THE COLUMN 'COMMENTS' BELOW

#### **REPAIR METHOD**

**HA** = Hot Air (removal & mounting)

**ST** = Soldering Tool (removal & mounting)

**HA/ST** = Hot Air for removal - Soldering Tool for mounting

**BGA** = BGA Station

**BH** = Bottom Heater

#### **ADDITIONAL INFORMATION**

⇒1 (2, 3, 4, etc.) = Proceed to 'Additional Repair Info' for further instructions in the indicated section(s).

## Primary Side

Position	Component	Part no.	Comments
CN4000	Card Conn SIM 3in2 Connector	1299-2861	HA+BH or BGA → 1
CN4404	Conn Coax Receptacle 1p	1299-1838	HA+BH → 2
CN4801	Conn Leaf Spring Plug 1p	1295-7077	HA+BH → 3
CN4803	Conn Leaf Spring Plug 1p	1295-7077	HA+BH → 3
CN4804	Conn Leaf Spring Plug 1p	1295-7077	HA+BH → 3
CN4805	Conn Pogopin Plug 1p	1299-5323	HA+BH → 4
CN4807	Conn Pogopin Plug 1p	1299-5323	HA+BH → 4
CN4808	Conn Pogopin Plug 1p	1299-5323	HA+BH → 4
CN4831	Conn Leaf Spring Plug 1p	1295-7077	HA+BH → 5
CN4833	Conn Pogopin Plug 1p	1293-2433	HA+BH → 6
CN4834	Conn Coax Receptacle 1p	1299-9890	HA+BH → 7
CN4836	Conn Coax Receptacle 1p	1299-9890	HA+BH → 7
CN4837	Conn Coax Receptacle 1p	1299-9890	HA+BH → 7
CN4841	Conn Leaf Spring Plug 1p WH : 0.8+-0.2	1294-8905	HA+BH → 8
CN4843	Conn Coax Receptacle 1p	1299-9890	HA+BH → 9
CN4844	Conn Coax Receptacle 1p	1299-9890	HA+BH → 9
CN4848	Conn Leaf Spring Plug 1p	1294-8163	HA+BH → 10
CN4849	Conn Leaf Spring Plug 1p	1294-8163	HA+BH → 11
CN4890	Conn Leaf Spring Plug 1p WH : 0.8+-0.2	1294-8905	HA+BH → 12
CN4891	Conn Leaf Spring Plug 1p WH : 0.8+-0.2	1294-8905	HA+BH → 12
CN7998	Conn Leaf Spring Plug 1p WH : 0.8+-0.2	1294-8905	HA+BH → 12
CN8000	Conn Pogopin Plug 1p	1299-5323	HA+BH → 13
CN8001	Conn Pogopin Plug 1p	1299-5323	HA+BH → 13
CN8009	Conn Leaf Spring Plug 1p WH : 0.8+-0.2	1294-8905	HA+BH → 12
CN8600	Conn Pogopin Plug 1p	1299-5323	HA+BH → 13
CN8601	Conn Pogopin Plug 1p	1299-5323	HA+BH → 13
CN8650	Conn Pogopin Plug 1p	1293-2433	HA+BH → 14
CN8651	Conn Pogopin Plug 1p	1299-5323	HA+BH → 14

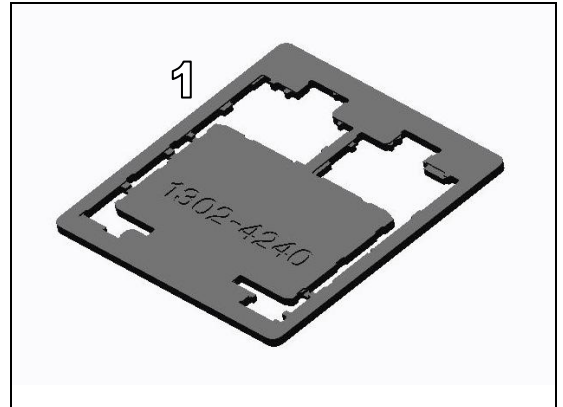
## Secondary Side

Position	Component	Part no.	Comments
CN4403	Conn Coax Receptacle 1p	1261-3585	HA+BH → 1
CN4551	Conn Coax Receptacle 1p	1261-3585	HA+BH → 2
CN4813	Conn Pogopin Plug 1p	1299-5323	HA+BH → 3
CN4820	Conn Pogopin Plug 1p	1299-5323	HA+BH → 4
CN4821	Conn Pogopin Plug 1p	1299-5323	HA+BH → 5
CN4823	Conn Pogopin Plug 1p	1299-5323	HA+BH → 6
CN4824	Conn Pogopin Plug 1p	1299-5323	HA+BH → 7
CN4825	Conn Pogopin Plug 1p	1299-5323	HA+BH → 8
CN4845	Conn Coax Receptacle 1p Mount Clip	1287-4587	HA+BH → 9
CN4846	Conn Coax Receptacle 1p Mount Clip	1287-4587	HA+BH → 9
CN4847	Conn Coax Receptacle 1p Mount Clip	1287-4587	HA+BH → 9
D7800	LED White 1.63mm x 2.03mm	1278-5197	HA+BH → 10

## 2 Tool

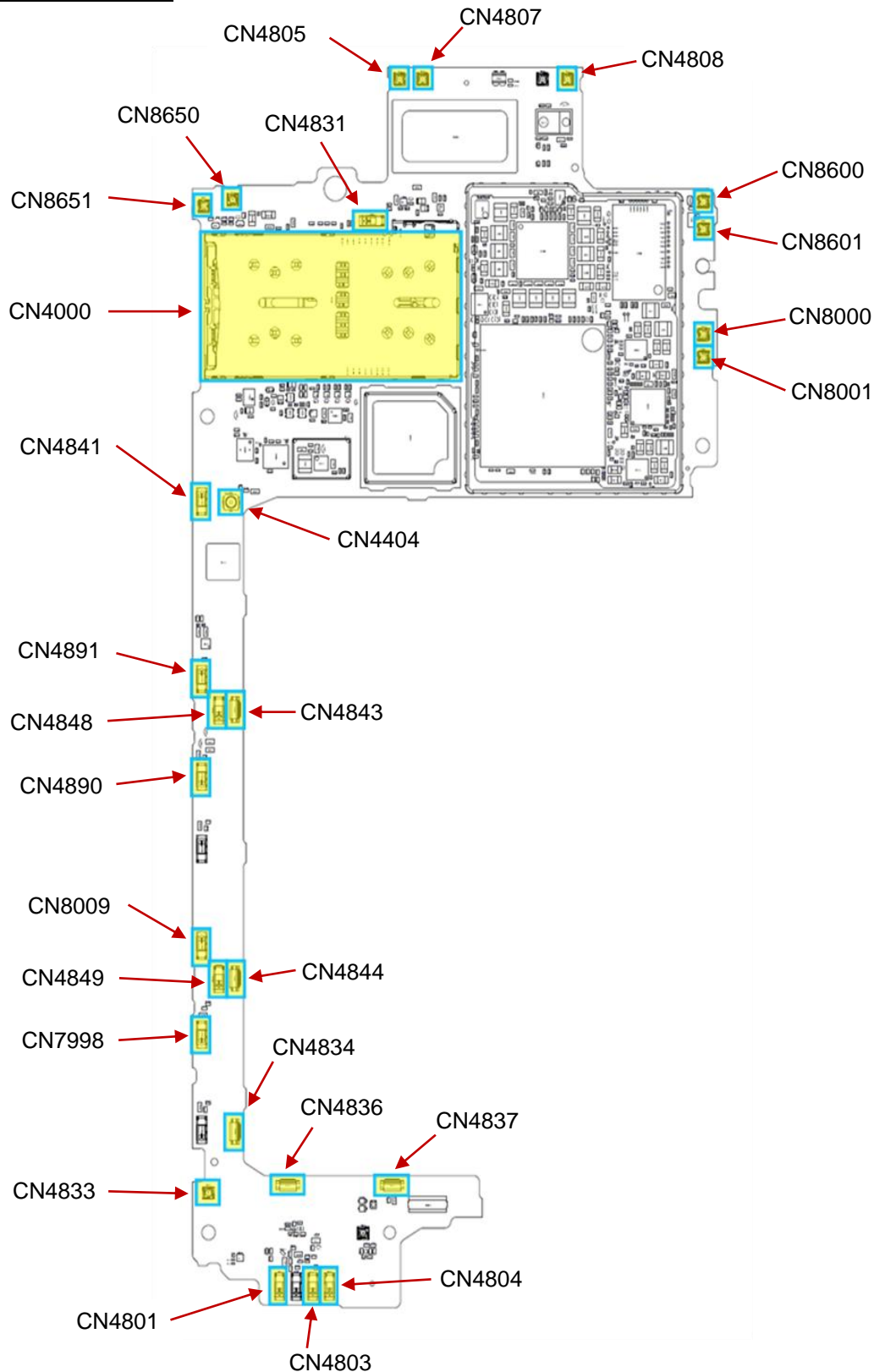
### SPECIAL TOOL

1. Soldering Fixture (1302-4240)



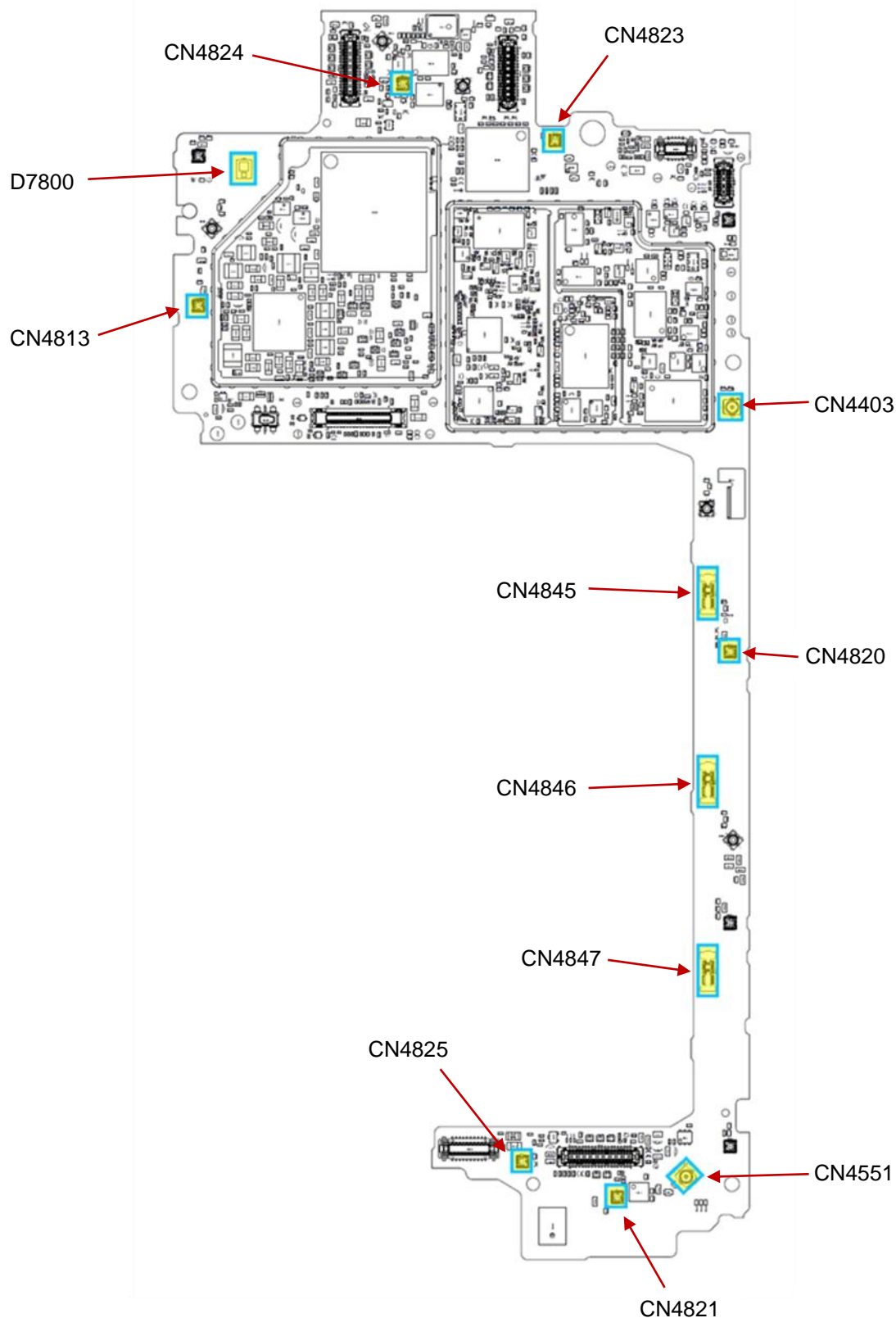
## 3 Component Placing

### Primary Side



## Component Placing

### Secondary Side





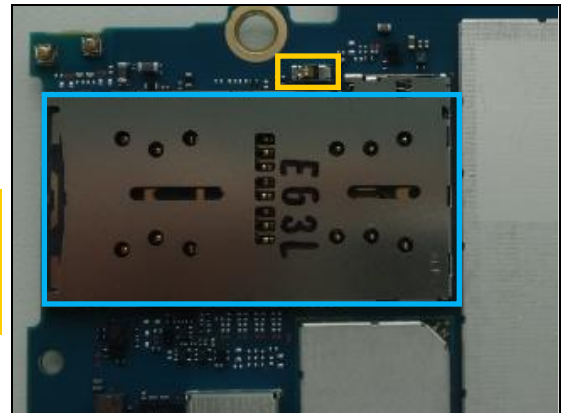
## 4 Additional Repair Info

### Primary Side 1

CN4000

*Replace if mechanical damaged (No network, restart, No SIM card is detected, no SD card is detected, can't insert Cap Tray Assy)*

*Protect the spring pin with capton tape!*

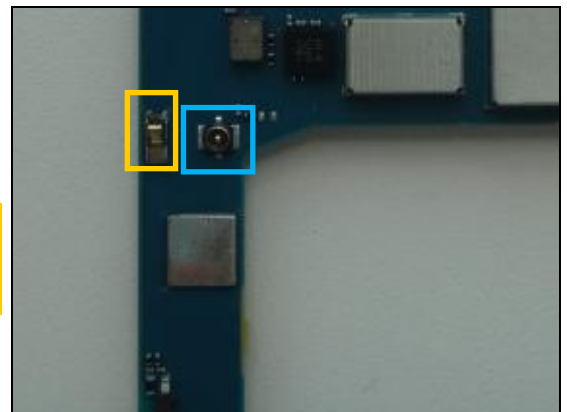


### Primary Side 2

CN4404

*Replace if mechanical damaged (No or bad network, antenna).*

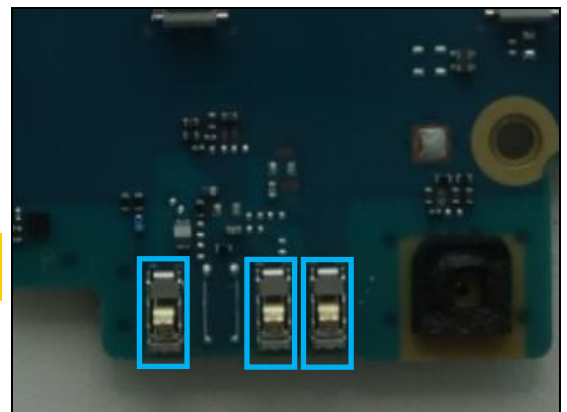
*Protect the spring pin with capton tape!*



### Primary Side 3

CN4801, CN4803, CN4804

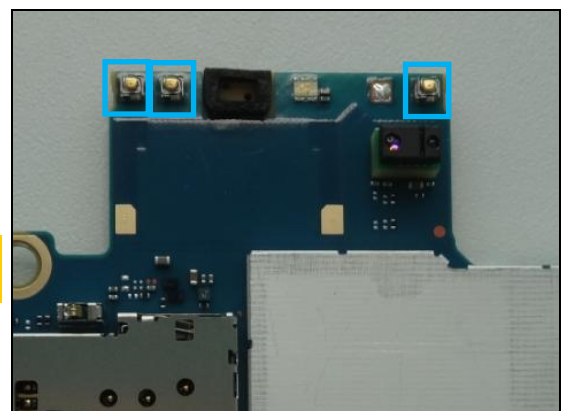
*Replace if mechanical damaged (No or bad network, antenna).*



### Primary Side 4

CN4805, CN4807, CN4708

*Replace if mechanical damaged (No or bad network, antenna).*



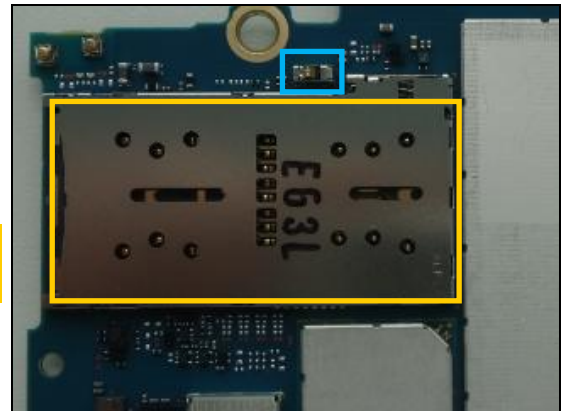
## Additional Repair Info

### Primary Side 5

CN4831

*Replace if mechanical damaged.*

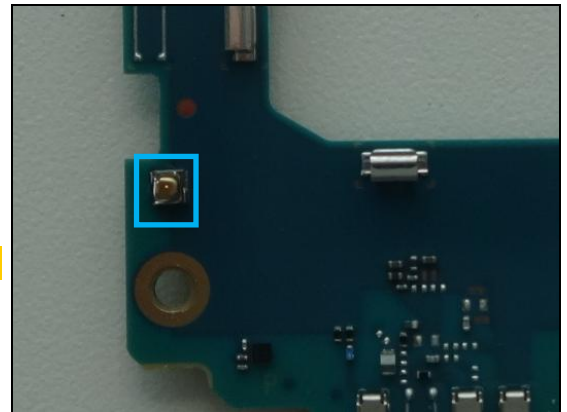
*Protect the SIM /SD connector with capton tape!*



### Primary Side 6

CN4833

*Replace if mechanical damaged.*

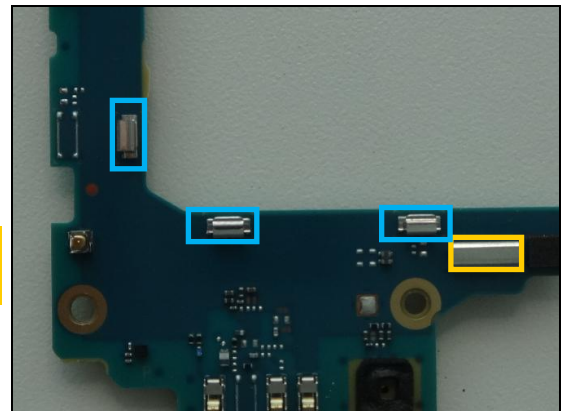


### Primary Side 7

CN4834, CN4836, CN4837

*Replace if mechanical damaged.*

*Protect the shield plate with capton tape!*

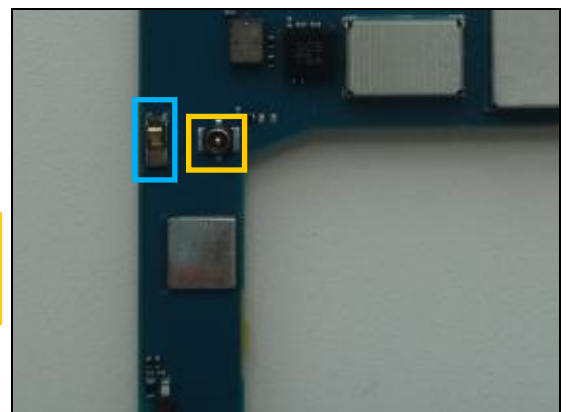


### Primary Side 8

CN4841

*Replace if mechanical damaged (No or bad network, antenna).*

*Protect the RF Connector with capton tape!*



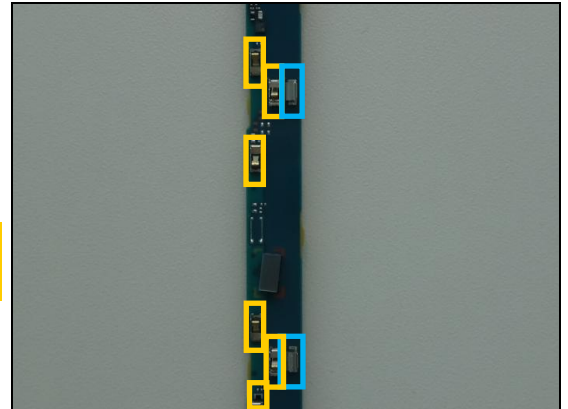
## Additional Repair Info

### Primary Side 9

CN4843, CN4844

*Replace if mechanical damaged.*

*Protect the spring pins with capton tape!*

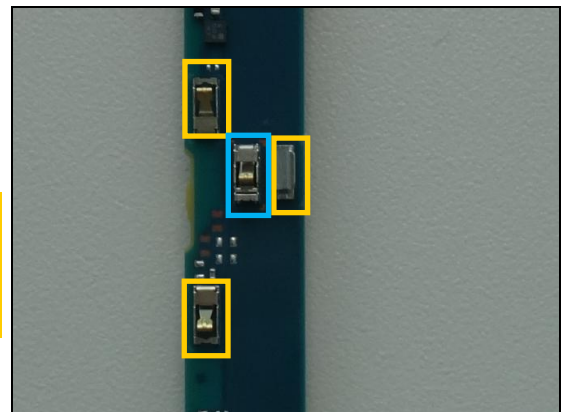


### Primary Side 10

CN4848

*Replace if mechanical damaged (No or bad network, antenna).*

*Protect the RF cable holder and spring pins with capton tape!*

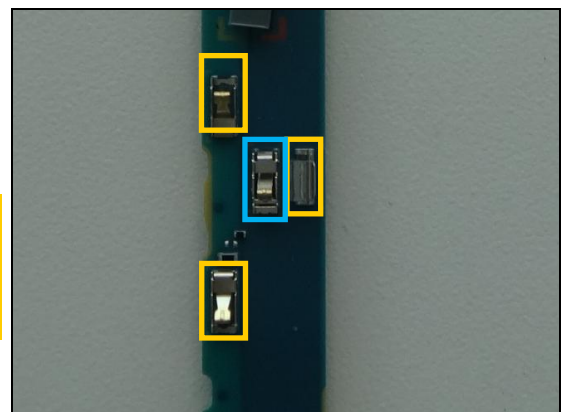


### Primary Side 11

CN4849

*Replace if mechanical damaged (No or bad network, antenna).*

*Protect the RF cable holder and spring pins with capton tape!*

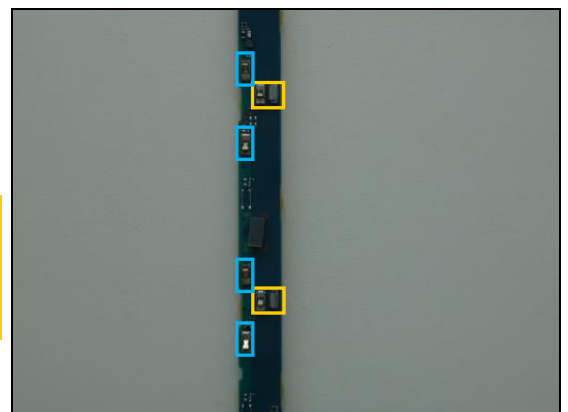


### Primary Side 12

CN4890, CN4891, CN7998, CN8009

*Replace if mechanical damaged (No or bad network, antenna).*

*Protect the RF cable holder and spring pins with capton tape!*

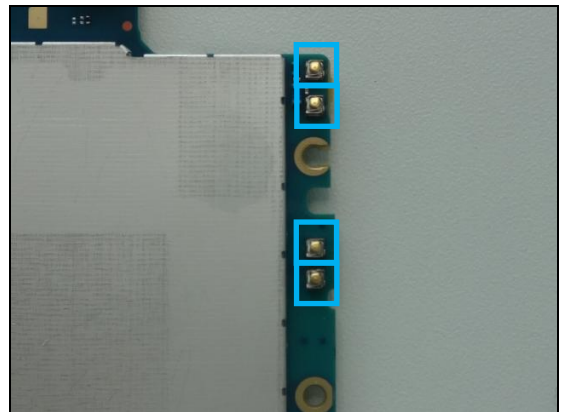


## Additional Repair Info

### Primary Side 13

CN8000, CN8001, CN8600, CN8601

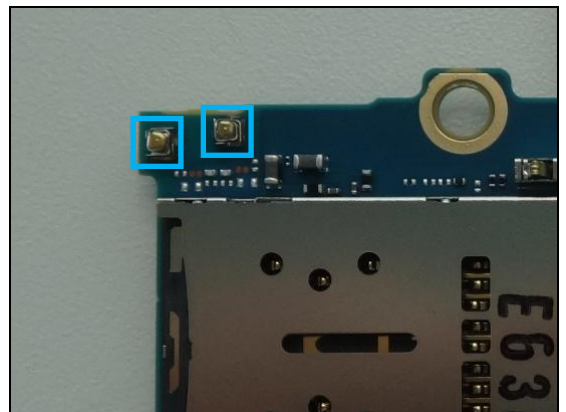
**Replace if mechanical damaged (No or bad network, antenna, NFC function).**



### Primary Side 14

CN8650, CN8651

**Replace if mechanical damaged (No or bad NFC function).**

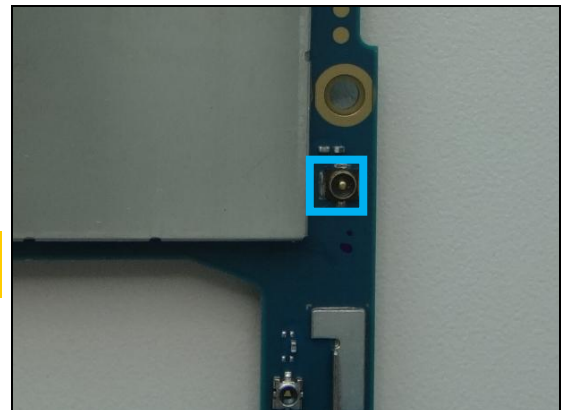


## Additional Repair Info

### Secondary Side 1

CN4403

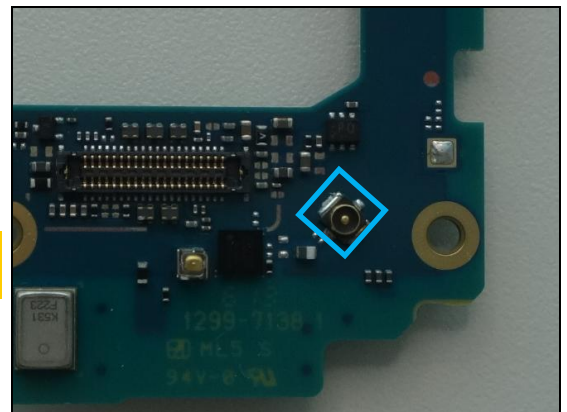
**Replace if mechanical damaged (No or bad network, antenna).**



### Secondary Side 2

CN4551

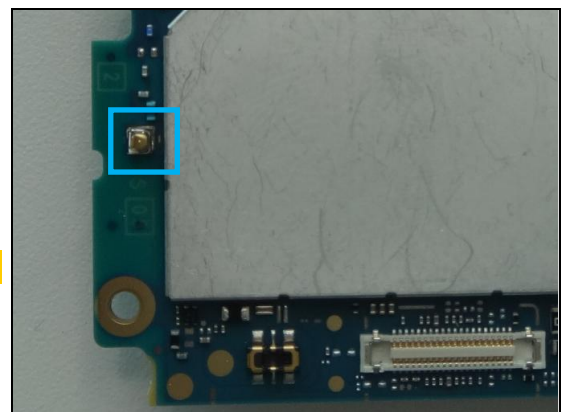
**Replace if mechanical damaged (No or bad network, antenna).**



### Secondary Side 3

CN4813

**Replace if mechanical damaged.**

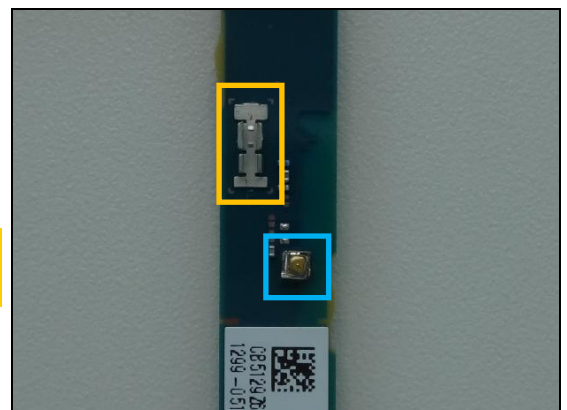


### Secondary Side 4

CN4820

**Replace if mechanical damaged.**

**Protect the RF cable holder with capton tape!**





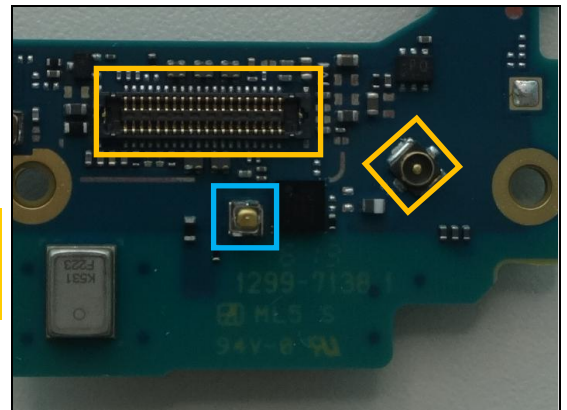
## Additional Repair Info

### Secondary Side 5

CN4821

*Replace if mechanical damaged.*

*Protect the RF connector and B to B connector with capton tape!*

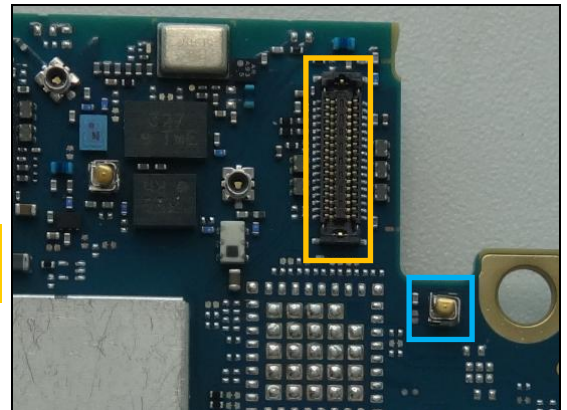


### Secondary Side 6

CN4823

*Replace if mechanical damaged.*

*Protect the B to B connector with capton tape!*

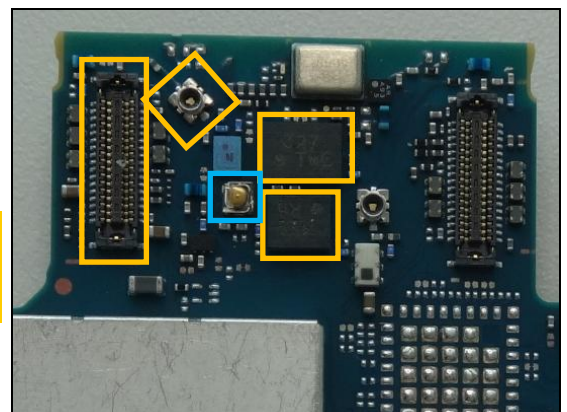


### Secondary Side 7

CN4824

*Replace if mechanical damaged.*

*Protect the B to B connector, RF connector, and ICs with capton tape!*

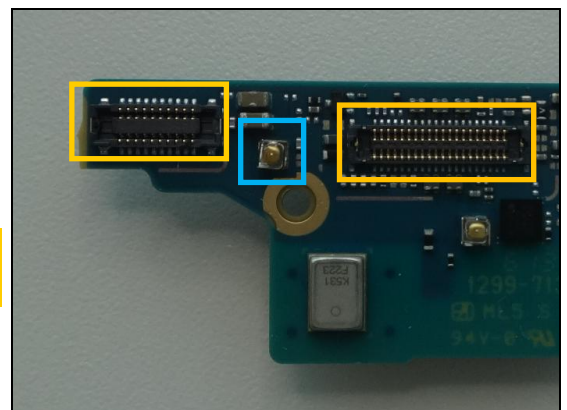


### Secondary Side 8

CN4825

*Text! Replace if mechanical damaged.*

*Protect the B to B connectors with capton tape!*



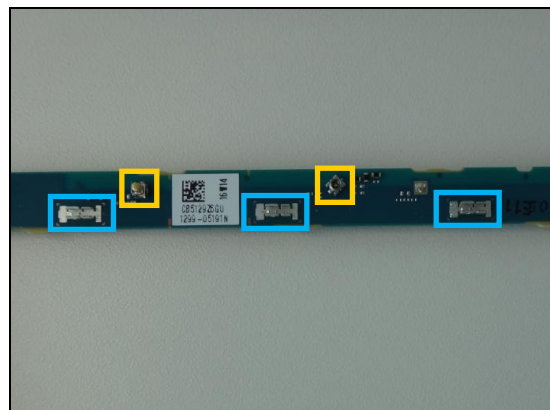
## Additional Repair Info

### Secondary Side 9

CN4845, CN4846, CN4847

**Text! Replace if mechanical damaged.**

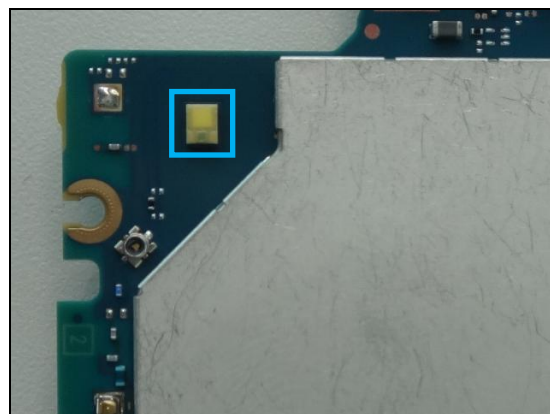
**Protect the spring pin and RF connector with capton tape!**



### Secondary Side 10

D7800

**Replace if Flash LED doesn't working.**



## 5 Revision History

Rev.	Date	Changes / Comments
1	2016-Jun-3	Initial release